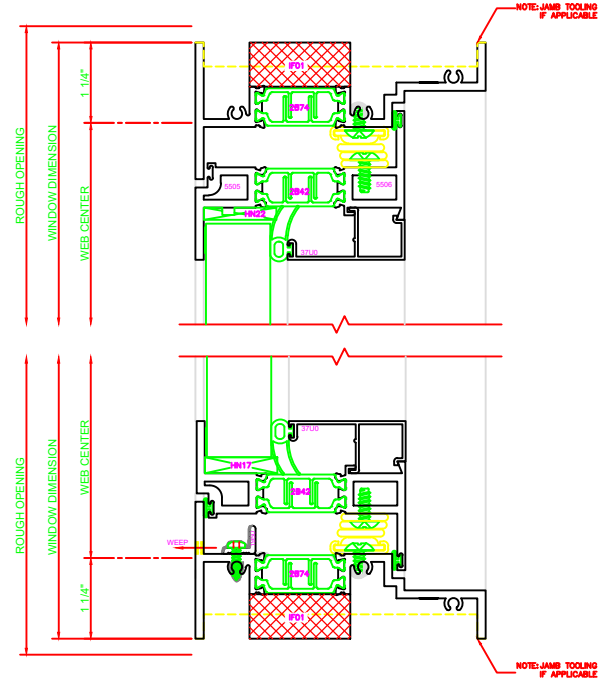


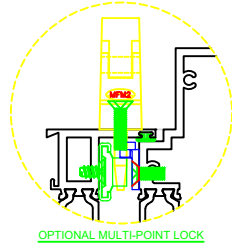
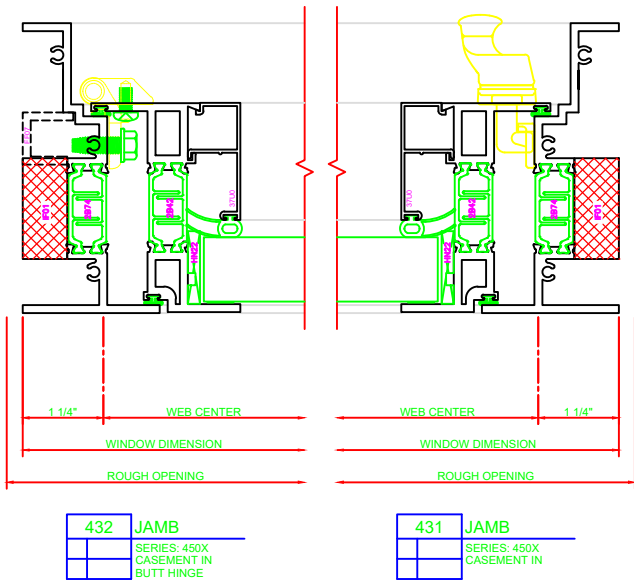
130	HEAD
	SERIES: 450X
	CASEMENT IN
	4-BAR ARMS

230	SILL
	SERIES: 450X
	CASEMENT IN
	4-BAR ARMS



## 4-BAR ARMS BUTT HINGE

**ERECTOR NOTE:**  
 THE HINGED JAMB FRAME SHALL BE INSTALLED PLUMB. ALL HINGES SHALL BE SECURELY BLOCKED AND ANCHORED TO THE CONDITION THROUGH THE HINGES OR AS CLOSE AS POSSIBLE TO THE HINGES.



131	HEAD
	SERIES: 450X
	CASEMENT IN
	BUTT HINGE

231	SILL
	SERIES: 450X
	CASEMENT IN
	BUTT HINGE

